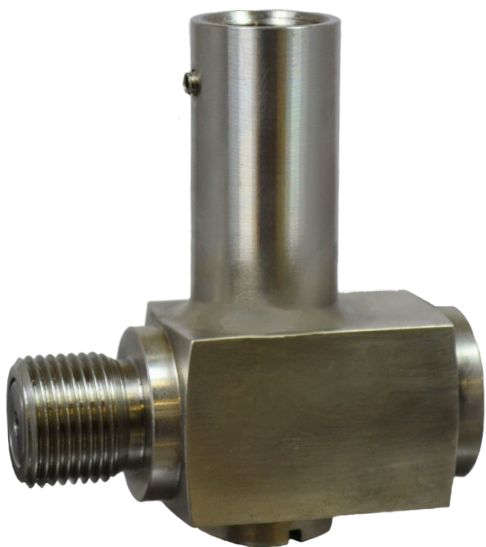


# VALVOLE "SALVAMANOMETRO" serie : VSM

Gauge protector valves series : VSM



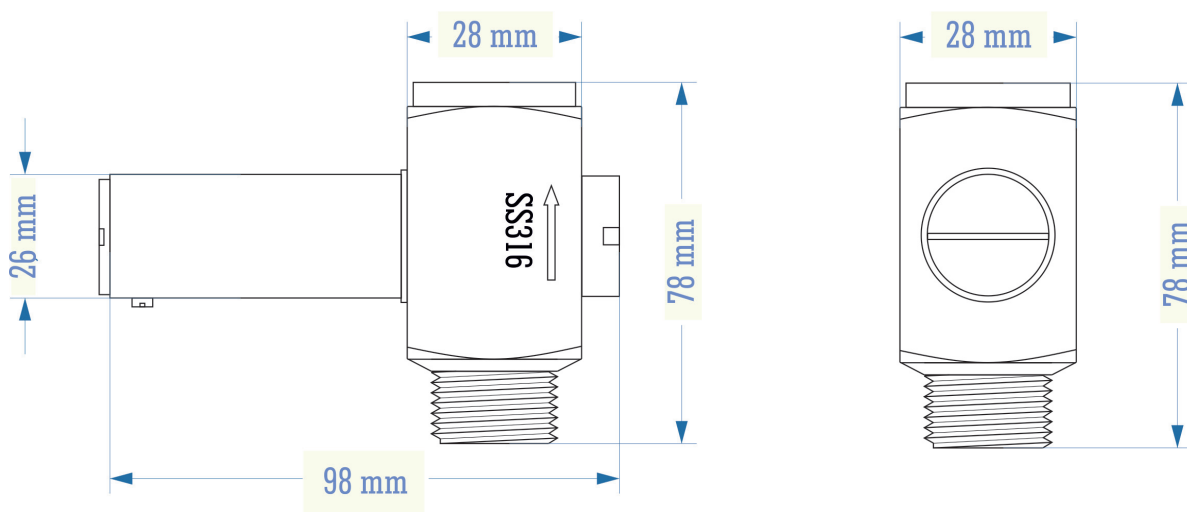
La valvola "salvamanometro" serie VSM è una valvola di sicurezza che consente di proteggere gli strumenti escludendoli automaticamente, prevenendo in tal modo danni causati da sovrappressioni o colpi d'ariete.

*The gauge protector valve series VSM is a safety valve that allow to protect the pressure instruments shut off automatically. It prevening calibration failure, and damages caused by overpressures and fluid hammer effects.*

## CARATTERISTICHE TECNICO - COSTRUTTIVE DESIGN FEATURES

**Materiale :** AISI 316 L  
**Sede :** BUNA  
**Precisione del set point :** +/- 4%  
**Attacchi :** 1/4" - 3/8" - 1/2"  
**Rating :** 400 bar (6000 psi)  
**Temperatura d'esercizio :** da -25°C a +120°C  
 (da -25°C fino a +240°C con sede in VITON)

**Material :** AISI 316 L  
**Packing :** BUNA  
**Set point accuracy :** +/- 4%  
**Connections :** 1/4" - 3/8" - 1/2"  
**Rating :** 400 bar (6000 psi)  
**Working temperature :** from -25°C up to +120°C  
 (from -25°C up to +240°C with VITON packing)



**Automazioni Misure & Controlli S.r.L.**  
 Via Pietro L'Eremita, 3 - 00162 - Roma (Italy)  
 Tel. : +39.06.44260668 / +39.06.44202185  
 Fax : +39.0623328444  
 Mail : info@amecroma.com  
 Web : www.amecroma.com  
 Web : www.imanometri.com